



IMAGING TECHNOLOGY

RELEASE NOTES

IONODES PLUG-IN FOR MILESTONE

VERSION 1.0.2.5

November 20, 2024

Version 1.0.2.5

RESOLVED ISSUES

- Improve performance when fetching Device list.
- Fix an issue that caused problem when a device port was not correctly configured.

NEW FEATURES

- Added support for Milestone SSL streaming.
- Added support for the R300 product.

KNOWN ISSUES

- If you physically unplug a live camera, the image on the SDS is going to freeze.

Version 1.0.2.2

RESOLVED ISSUES

- Fix an issue where we would send IPV6 address to the SDS.
- Error messages when sending a view to a SDS have been collected in a single error message box.
- Fix an issue that generated an exception when trying to send a view containing a deleted camera.

NEW FEATURES

- It is no longer needed to manually enter the imaging server in the SDS configuration.
- Now supporting devices on multiple imaging servers.
- Now supporting the selection of the camera stream to send to the SDS.

KNOWN ISSUES

- If you physically unplug a live camera, the image on the SDS is going to freeze.

Version 1.0.1.0

RESOLVED ISSUES

- No new resolved issue.

NEW FEATURES

- Added support for the Milestone Imaging Server as a data source. The plug-in supports connecting to a Milestone Onvif Bridge or to a Milestone Imaging Server as a valid data source.

KNOWN ISSUES

- If you physically unplug a live camera, the image on the SDS is going to freeze.

Version 1.0.0.3

RESOLVED ISSUES

- Creating a blank SDS entry (all fields empty) no longer causes that SDS entry to be locked and unmodifiable.
- The plugin page now always displays feedback if there are more SDS entries detected than the maximum number allowed by the plugin license.

NEW FEATURES

- No new feature.

KNOWN ISSUES

- No known issue.

Version 1.0.0.2

RESOLVED ISSUES

- Fixed a condition preventing the user from adding new Secure Display Stations while in trial.
- If the number of Secure Display Stations exceeds the number of license activations, the plugin now requests that the extra devices be removed.

NEW FEATURES

- No new feature.

KNOWN ISSUES

- No known issue.

Version 1.0.0.1

RESOLVED ISSUES

- No new resolved issue.

NEW FEATURES

- Added Licensing (contact IONODES Sales for details)

KNOWN ISSUES

- No known issues.

Version 1.0.0.0

RESOLVED ISSUES

- No new resolved issue.

NEW FEATURES

- New plug-in for Milestone XProtect that allows camera views from the Smart Client to be replicated on IONODES Secure Display Stations.

KNOWN ISSUES

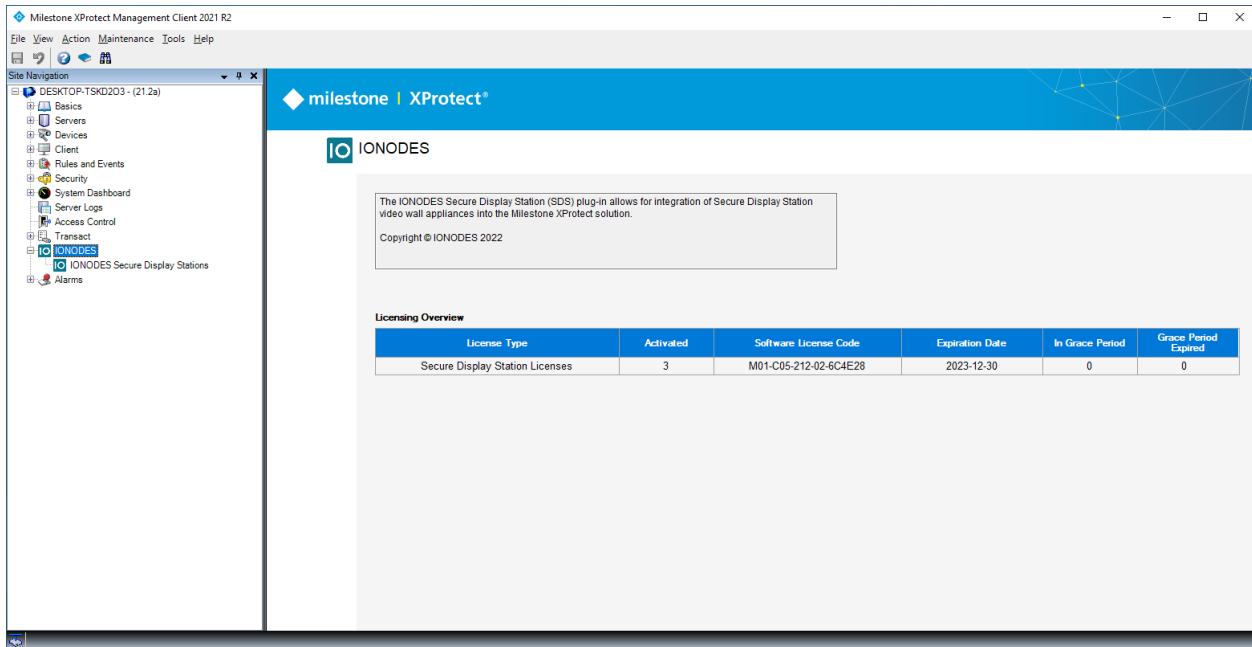
- No known issues.

INSTALLATION NOTES

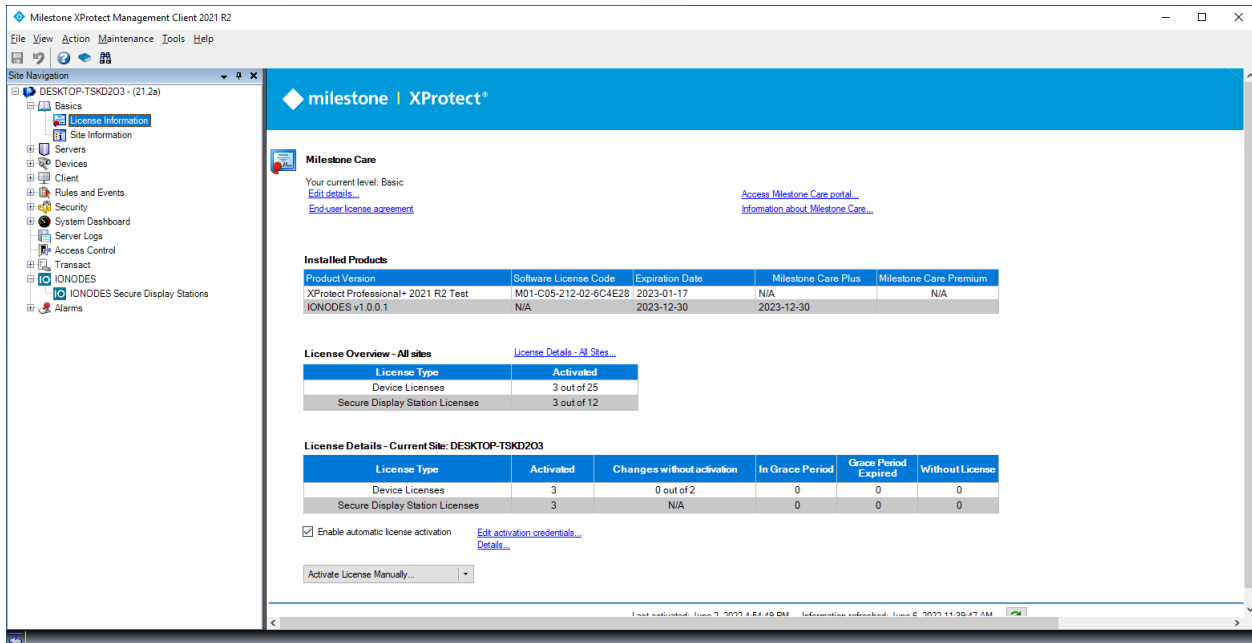
- Server requirements:
 - The IONODES Plugin for Milestone works with the following versions of Milestone XProtect:
 - Milestone XProtect Express+ 2021 R2 or later
 - Milestone XProtect Professional+ 2021 R2 or later
 - Milestone XProtect Expert 2021 R2 or later
 - Milestone XProtect Corporate 2021 R2 or later
 - The plugin also requires:
 - Milestone Open Network Bridge
- Server installation:
 - Please see Milestone's documentation on how to install and configure XProtect.
 - Please see Milestone's documentation on how to install and configure the Open Network Bridge.
 - See [Milestone Open Network Bridge | Milestone Documentation 2021 R2](https://doc.milestonesys.com/latest/en-US/portal/htm/chapter-page-onvif.htm) (<https://doc.milestonesys.com/latest/en-US/portal/htm/chapter-page-onvif.htm>)
 - A tutorial from Milestone is also available online:
[Configuring and Using ONVIF - YouTube](https://www.youtube.com/playlist?list=PL6KbBiYxpwh06cAmD3KW7Fe9bv3tQsPX8)
(<https://www.youtube.com/playlist?list=PL6KbBiYxpwh06cAmD3KW7Fe9bv3tQsPX8>)
- Recommended: Create a security role for the Open Network Bridge users
 - See the tutorial from Milestone available online:
[Milestone ONVIF: Create ONVIF Role - YouTube](https://www.youtube.com/watch?v=WiVncjJBDqk&list=PL6KbBiYxpwh06cAmD3KW7Fe9bv3tQsPX8&index=5)
(<https://www.youtube.com/watch?v=WiVncjJBDqk&list=PL6KbBiYxpwh06cAmD3KW7Fe9bv3tQsPX8&index=5>)
- Before installing the plugin:
 - All Milestone clients on the computer must be closed.
 - All Milestone server components on the computer must be stopped.
 - Milestone requires plugins to be installed in a specific folder (**C:\Program Files\Milestone\MIPPlugins** by default) relative to its own installed location. If your Milestone software was installed in a different location, the plugin installation path must be adjusted accordingly.
 - Once the plugin is installed, restart all Milestone server components on the computer.

CONFIGURATION

Once the plugin is installed, a new section appears in the XProtect Management Client:

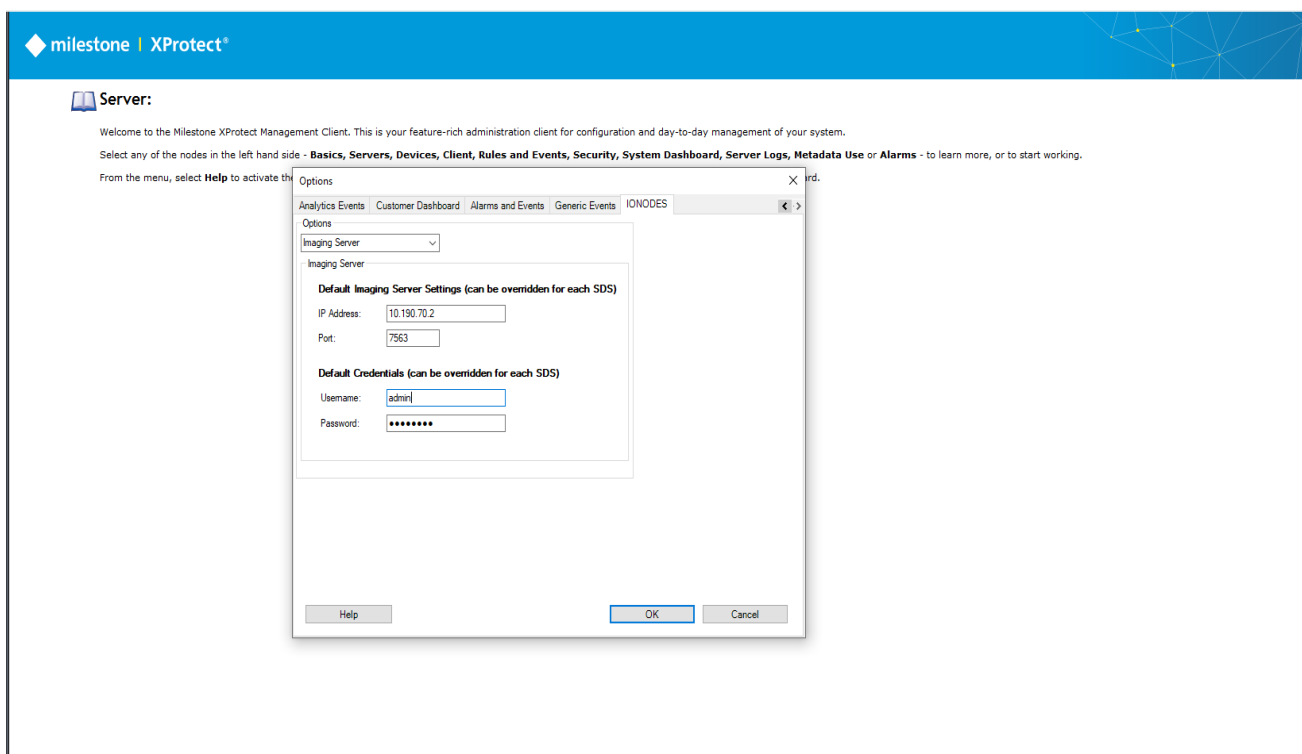


The plugin also appears in the licensing section of the XProtect server. To activate your license, please contact IONODES Sales.

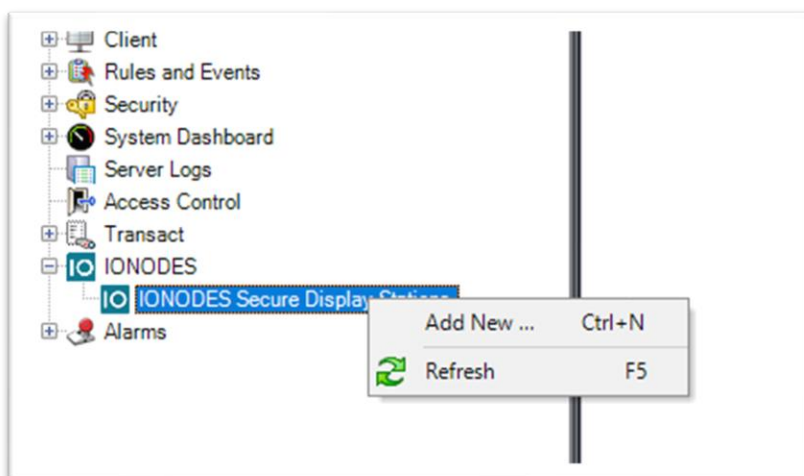


CONFIGURING THE IMAGING SERVER

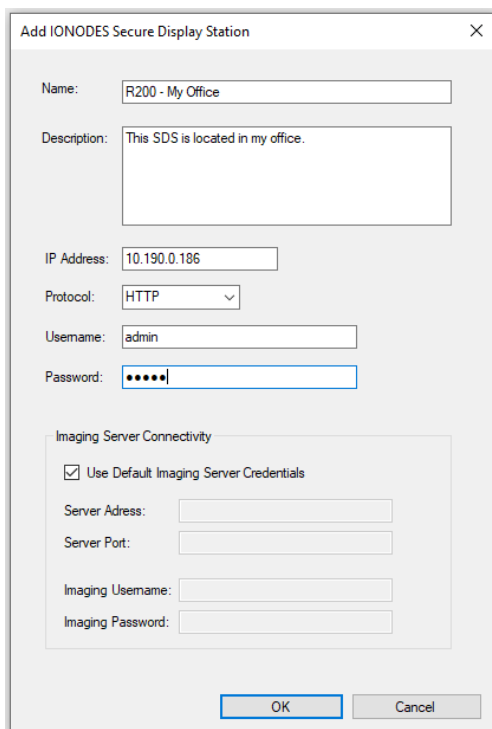
- Configuring the IONODES Plugin:
 - Open the Tools menu, then select Options.
 - In the window that appears, find the tab named « IONODES Plug-in »
 - Choose the Imaging Server options in the combo box
 - Fill out the details about the Imaging Server. This information will later be used by the IONODES Secure Display Stations to connect to the Imaging Server.
 - Click OK to save the information and close the window.



- Adding a new Secure Display Station:
 - In the Site Navigation pane, select IONODES Secure Display Stations and select Add New...



- A new window appears.
- Fill out the information about the Secure Display Station, then click OK.

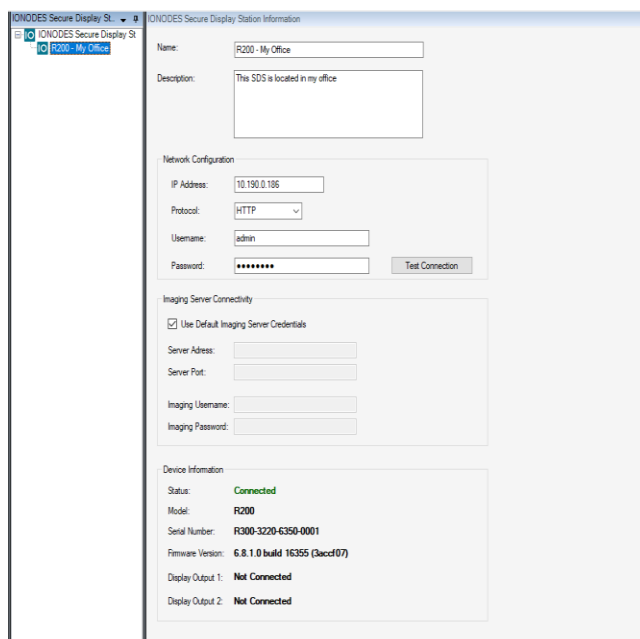


The dialog box titled "Add IONODES Secure Display Station" contains the following fields and options:

- Name: R200 - My Office
- Description: This SDS is located in my office.
- IP Address: 10.190.0.186
- Protocol: HTTP (dropdown menu)
- Username: admin
- Password: (masked with dots)
- Imaging Server Connectivity section:
 - ☒ Use Default Imaging Server Credentials
 - Server Address: (empty field)
 - Server Port: (empty field)
 - Imaging Username: (empty field)
 - Imaging Password: (empty field)

Buttons: OK, Cancel

- The Secure Display Station is then added:



The "IONODES Secure Display Station Information" window displays the configuration and status of the added station:

- Name: R200 - My Office
- Description: This SDS is located in my office.
- Network Configuration:
 - IP Address: 10.190.0.186
 - Protocol: HTTP (dropdown menu)
 - Username: admin
 - Password: (masked with dots)
 - Test Connection button
- Imaging Server Connectivity:
 - ☒ Use Default Imaging Server Credentials
 - Server Address: (empty field)
 - Server Port: (empty field)
 - Imaging Username: (empty field)
 - Imaging Password: (empty field)
- Device Information:
 - Status: **Connected**
 - Model: R200
 - Serial Number: R300-3220-6350-0001
 - Firmware Version: 6.8.1.0 build 16355 (3acdf07)
 - Display Output 1: **Not Connected**
 - Display Output 2: **Not Connected**

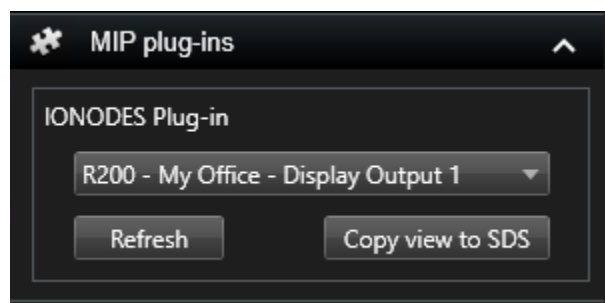
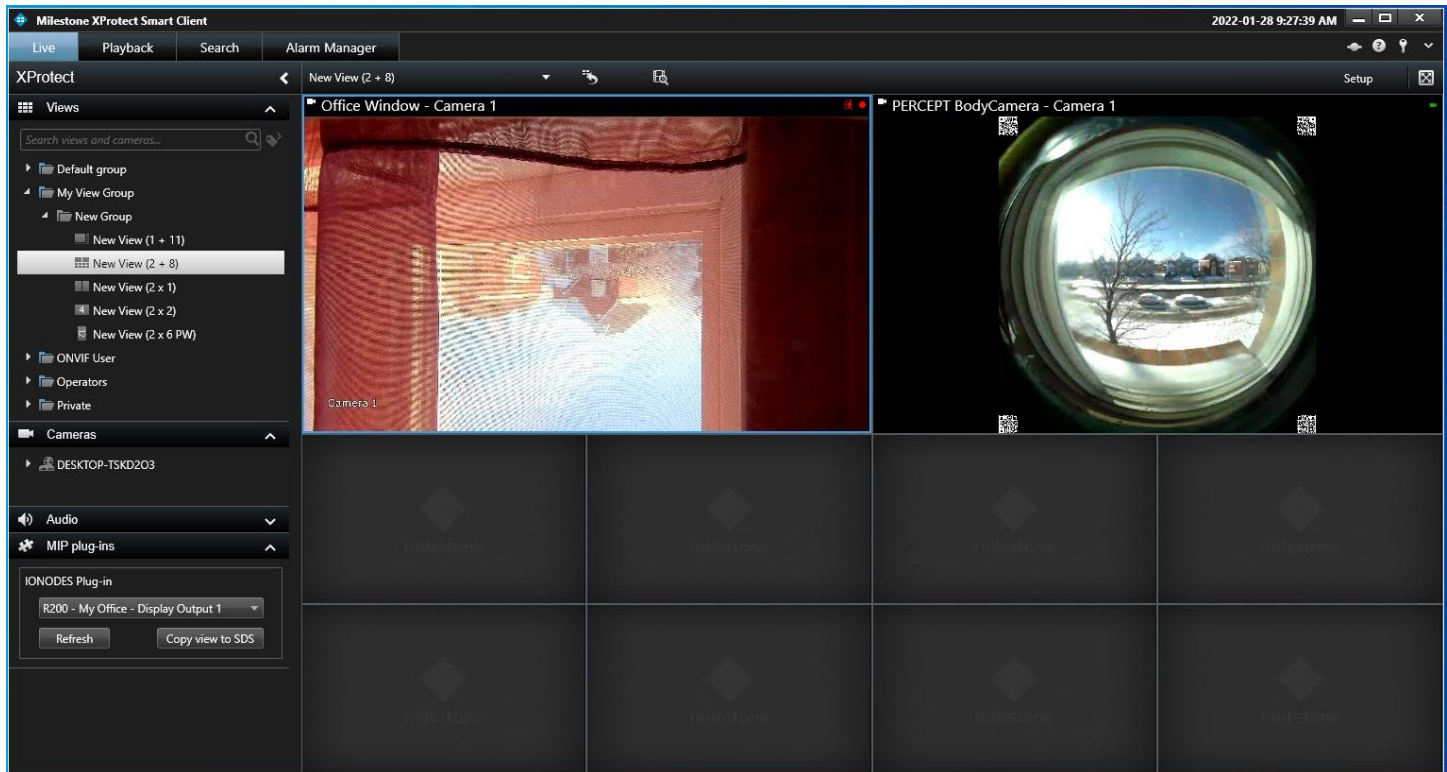
- **IMPORTANT:** When a new Secure Display Station is added, the IONODES plugin retrieves additional information from the device. If the additional information does not appear, then communication could not be established with the device. Until the IONODES plugin can

communicate with the device and obtain the required information, the Secure Display Station will not be available in the IONODES plugin's features.

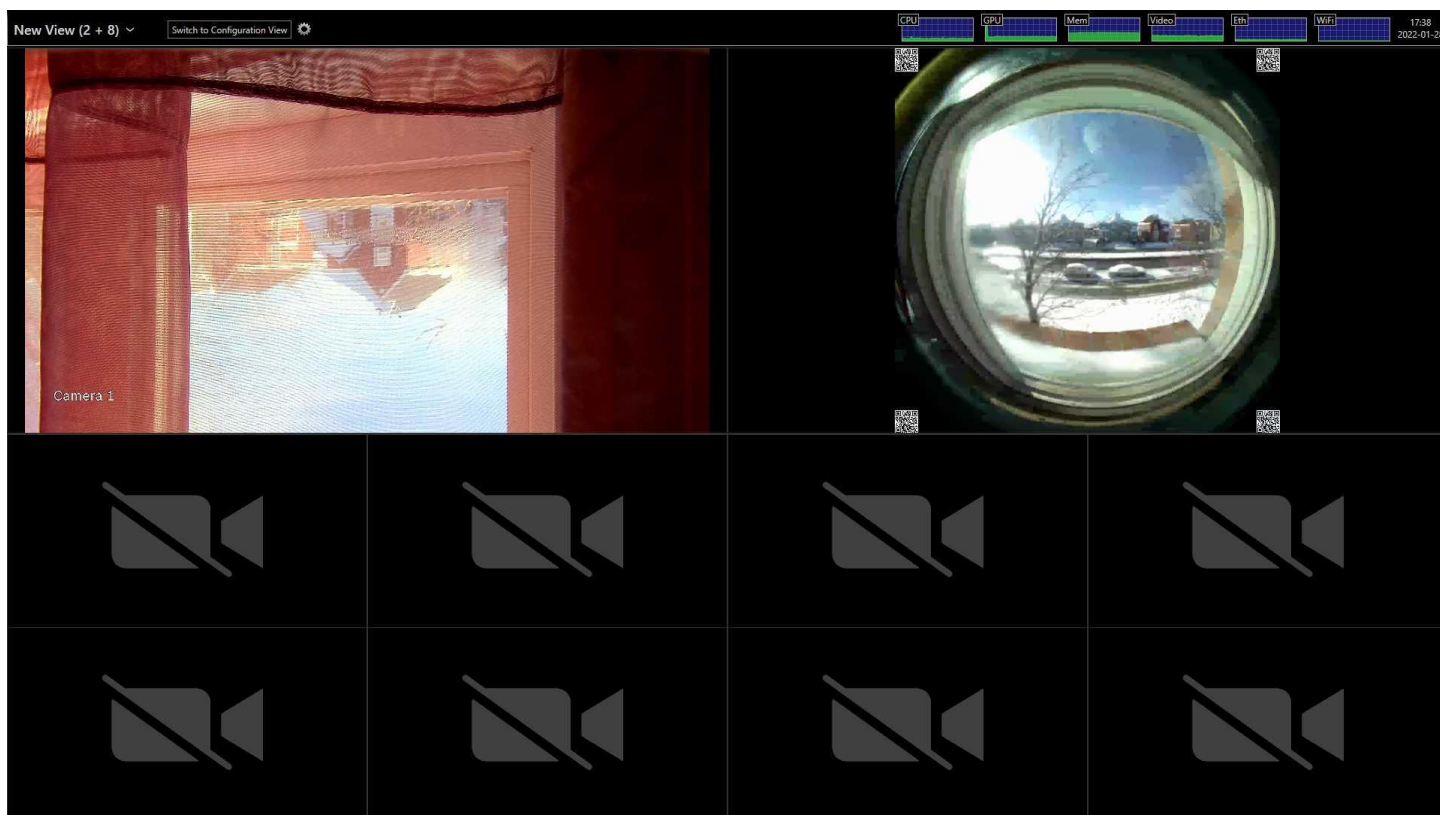
- Save the new Secure Display Station (File menu -> Save).

- Sending a view to a Secure Display Station:

- In the XProtect Smart Client, a new section appears in the Live section



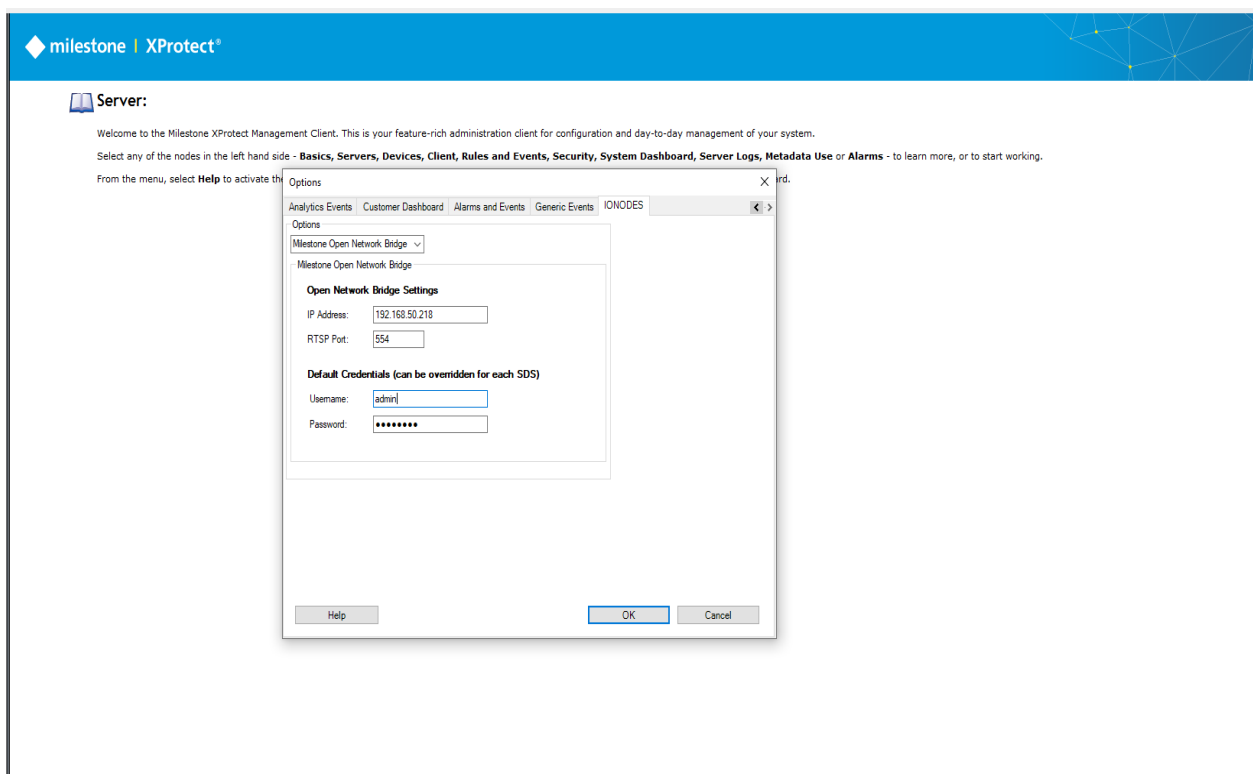
- In the Views pane, select a view to display
- In the IONODES Plug-in panel, select the Secure Display Station and display output where to replicate the view.
- Click on « Copy view to SDS » to send a copy of the view to the appropriate output of the SDS.
- The Secure Display Station displays the selected view.



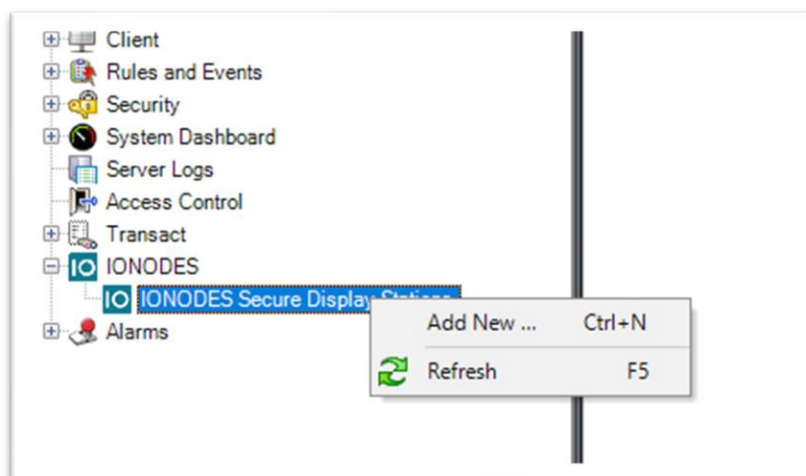
- Limitations:
 - The Secure Display Station can display a maximum of 16 tiles per view. Trying to send a view with more than 16 tiles is therefore not allowed.
 - When sending a view to a Secure Display Station, only the camera tiles are reproduced on the SDS. Tiles containing other types of information will be left empty on the SDS.

CONFIGURING THE MILESTONE OPEN NETWORK BRIDGE

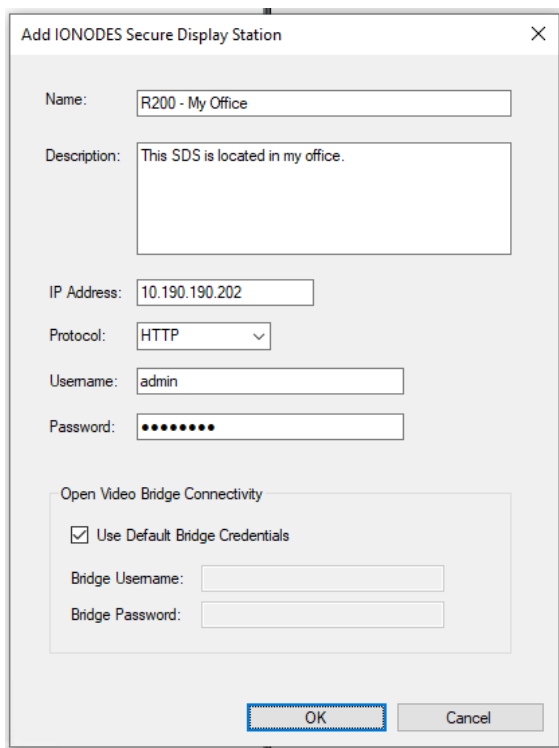
- Configuring the IONODES Plugin:
 - Open the Tools menu, then select Options.
 - In the window that appears, find the tab named « IONODES Plug-in »
 - Choose the Milestone Open Network Bridge options in the combo box
 - Fill out the details about the Open Network Bridge. This information will later be used by the IONODES Secure Display Stations to connect to the bridge.
 - Click OK to save the information and close the window.



- Adding a new Secure Display Station:
 - In the Site Navigation pane, select IONODES Secure Display Stations and select Add New...



- A new window appears.
- Fill out the information about the Secure Display Station, then click OK.



Add IONODES Secure Display Station

Name: R200 - My Office

Description: This SDS is located in my office.

IP Address: 10.190.190.202

Protocol: HTTP

Username: admin

Password: ••••••

Open Video Bridge Connectivity

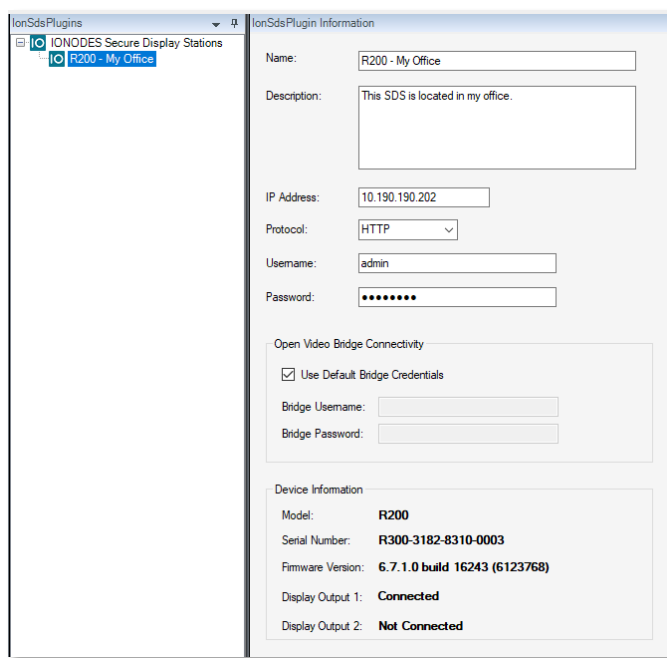
☒ Use Default Bridge Credentials

Bridge Username:

Bridge Password:

OK Cancel

- The Secure Display Station is then added:



IONODES Secure Display Stations

- R200 - My Office

IONODES Plugin Information

Name: R200 - My Office

Description: This SDS is located in my office.

IP Address: 10.190.190.202

Protocol: HTTP

Username: admin

Password: ••••••

Open Video Bridge Connectivity

☒ Use Default Bridge Credentials

Bridge Username:

Bridge Password:

Device Information

Model: R200

Serial Number: R300-3182-8310-0003

Firmware Version: 6.7.1.0 build 16243 (6123768)

Display Output 1: Connected

Display Output 2: Not Connected

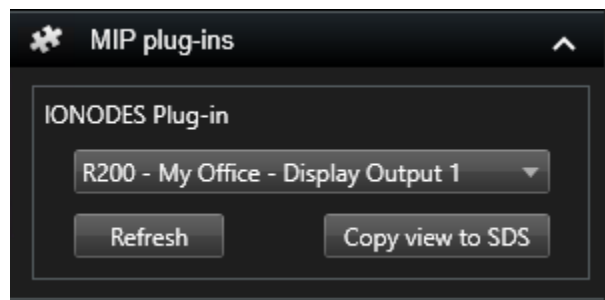
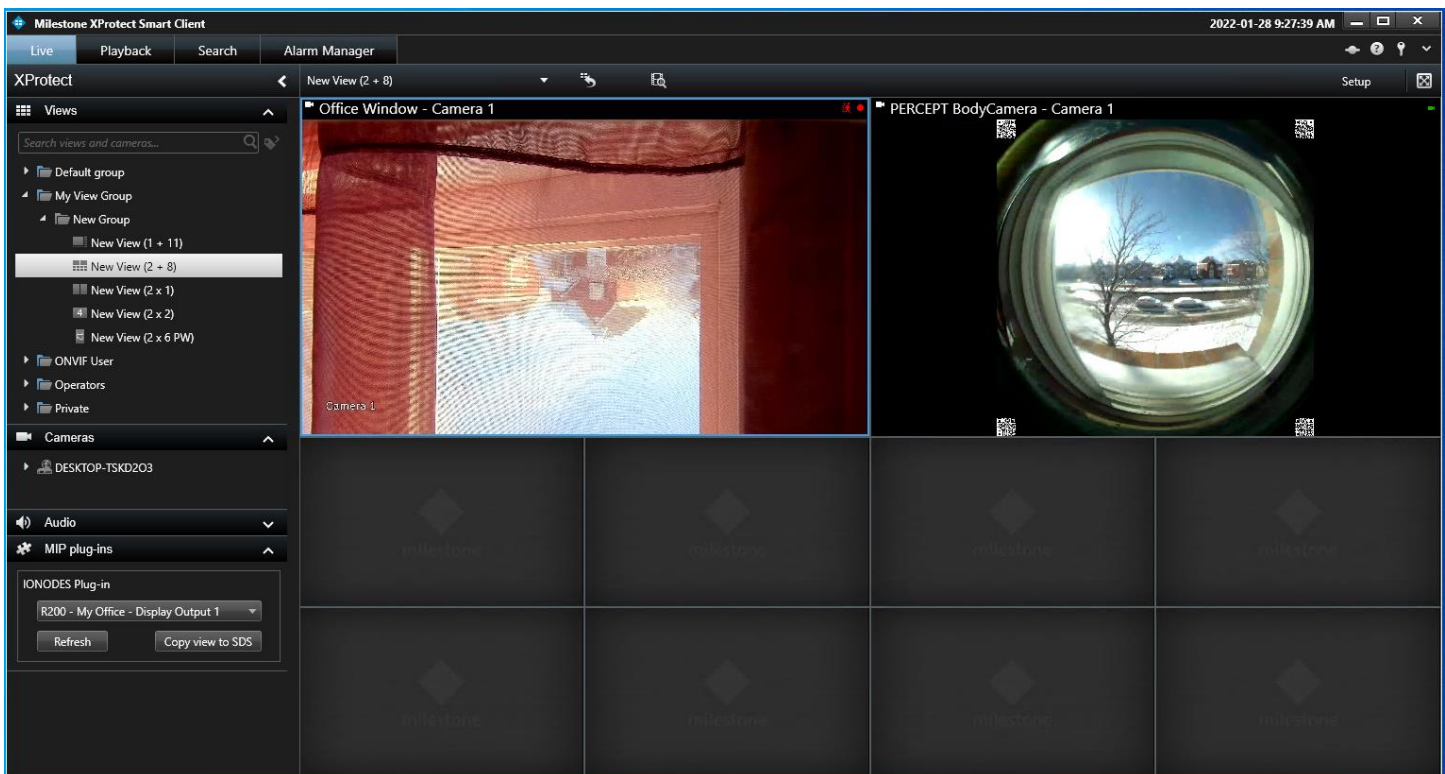
- **IMPORTANT:** When a new Secure Display Station is added, the IONODES plugin retrieves additional information from the device. If the additional information does not appear, then

communication could not be established with the device. Until the IONODES plugin can communicate with the device and obtain the required information, the Secure Display Station will not be available in the IONODES plugin's features.

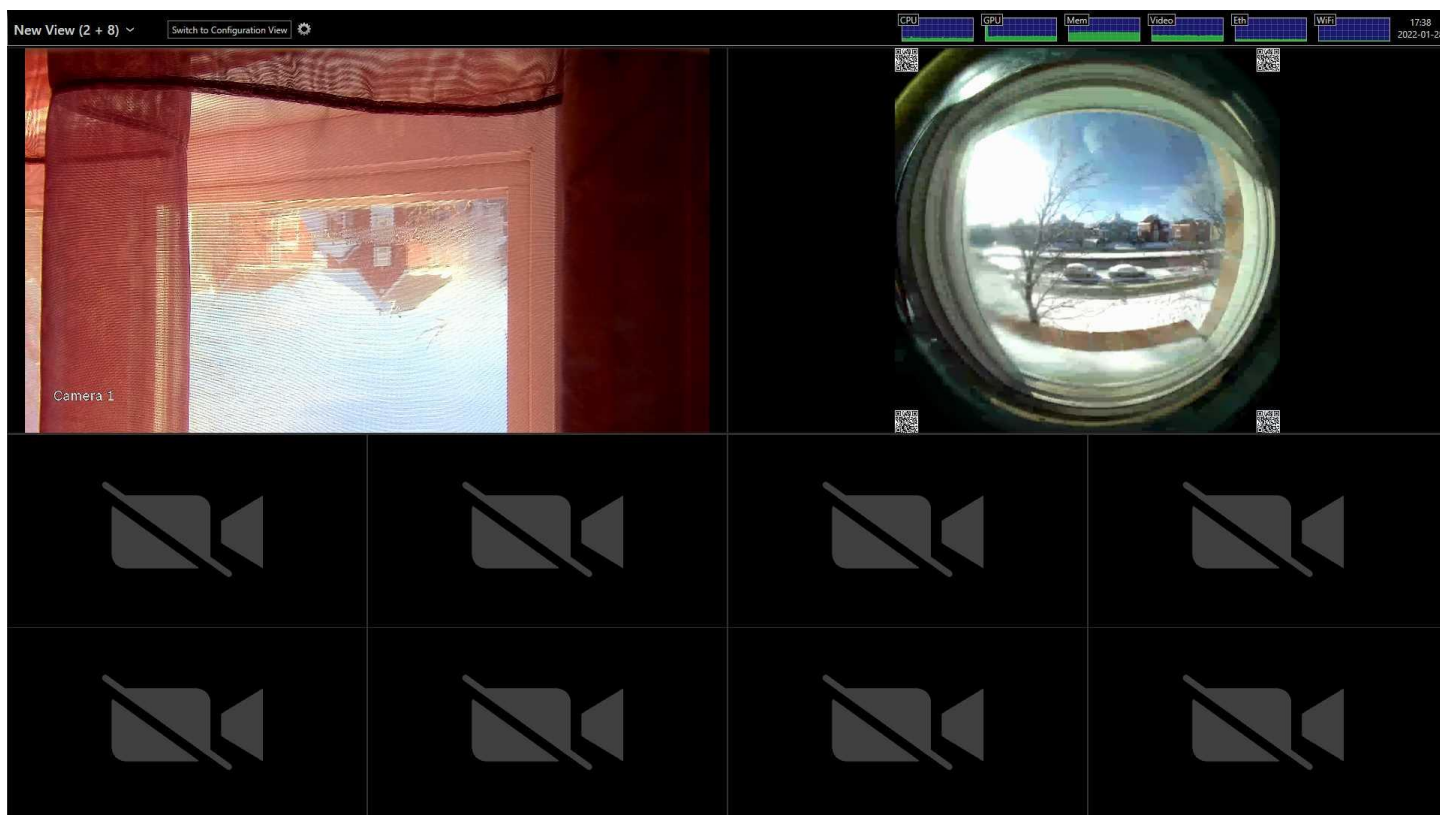
- Save the new Secure Display Station (File menu -> Save).

- Sending a view to a Secure Display Station:

- In the XProtect Smart Client, a new section appears in the Live section



- In the Views pane, select a view to display
- In the IONODES Plug-in panel, select the Secure Display Station and display output where to replicate the view.
- Click on « Copy view to SDS » to send a copy of the view to the appropriate output of the SDS.
- The Secure Display Station displays the selected view.



- Limitations:
 - The Secure Display Station can display a maximum of 16 tiles per view. Trying to send a view with more than 16 tiles is therefore not allowed.
 - When sending a view to a Secure Display Station, only the camera tiles are reproduced on the SDS. Tiles containing other types of information will be left empty on the SDS.